

NEWSLETTER

FURNESS VALE HISTORY SOCIETY

APRIL 2024

We would like to welcome our new Chairperson, Megan Thomas who took over the post at our AGM on March 5th. Our thanks go to Sam Vesey who has held the post for the past few years and to Alan Chorlton who has “stood in” when Sam has been unable to attend meetings.

We wish Megan the very best in her new role and know that she will take this on with great enthusiasm.

It is some time since Alan Roberts visited as guest speaker and we can look forward to an interesting account of railway lines proposed during the Victorian period but never constructed.

FURNESS VALE HISTORY SOCIETY

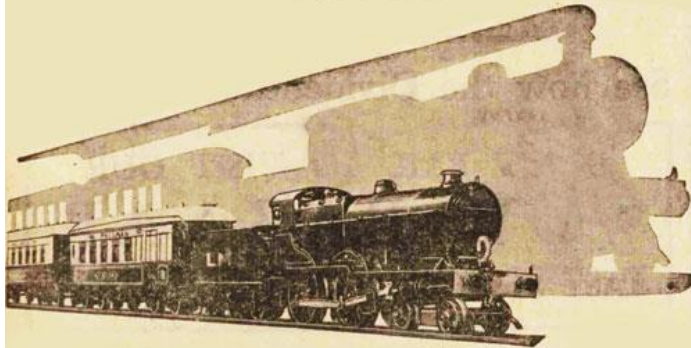
RAILWAYS

THAT NEVER WERE

PRESENTED BY ALAN ROBERTS

TUESDAY 2ND APRIL

7.30 PM



FURNESS VALE COMMUNITY CENTRE

ADMISSION £2

Derek Brumhead and George Hill

We have recently lost two well known and popular local people.

Derek Brumhead passed away, aged 93.

Derek had made a huge contribution to the heritage of New Mills in researching and recording many aspects of its history. Derek was the author of many publications, not only about New Mills but also concerning the history of the wider region.

He had for long been a mainstay of New Mills Local History Society and was also a regular supporter and contributor to Furness Vale History Society.

He was for many years, the administrator of New Mills Heritage Centre and was actively involved in other local organisations.

In 2005 Derek Brumhead was awarded an MBE for his services to heritage in New Mills



George passed away on 22nd March. For many years he had managed the Co-op footwear department in Whaley Bridge. He later opened his own shoe shop in Market Street, ably assisted by his wife, Pauline. On his retirement, his shop was converted to Footsteps community bookshop, cafe and drop in centre. For many years, George helped to manage Footsteps.

George had a wealth of knowledge about the history of Whaley Bridge, especially the Co-op. He was a friend to all and will be much missed.



A Local History Library

Our archives now contain more than 100 publications including books, leaflets, guide books and programmes. A large proportion of these relate to the High Peak region. A full listing now appears on our website: <https://furnesshistory.blogspot.com/p/a-library-of-books.html>. We cannot operate a lending library but members are welcome to view any of these titles for reference purposes. Details on the website. In addition, a number of out of copyright publications are held in a digital format and are available as pdf files. These titles are also listed on our website.



Buxton Public Library and Reading Room by Robert Lewis McLellan-Sim

Visit The Library

Whaley Bridge Library has a local history display supported by Furness Vale History Society and Whaley Bridge Living History Group. The latest display features photographs from the archive of Whaley Bridge Amenity Society.

Please support the library which has a dedicated local history section including research material and documentation not available elsewhere.



Goytside Bridge

FURNESS VALE FOOT BRIDGE ACROSS THE RIVER GOYT

Sir, - A few months since, through your valuable paper, I called attention to the awful condition of a footbridge across the River Goyt, at a place called Goyt Side, near to Furness Vale.

It still continues in that dangerous state, nothing left of it but its two sides destitute of rails, with only here and there a piece nailed across; consequently, none ought to attempt to cross it except they are very nimble, or they must practice waddling like a duck. Several accidents have occurred through it; several individuals have been immersed in the river by slipping off it. As it may not be generally known in our locality, and especially those who are accustomed to cross it, I think it is nothing but right that I should tell them of two cases, and thus put them on their guard. The first was Mr Henry Jepson, of New Mills, who works at Furness Vale Printworks, and who does a little clogging at nights. Well, one morning he was going to work, carrying his breakfast and three pairs of clogs thrown over his shoulder, and was crossing this bridge; but when he reached the middle, the deceitful old thing gave him a trip into the water. He lost his breakfast, and had to go floundering after the clogs. The last case was Mr John Alty of Furness Vale. He had previously boasted of his ability to cross it at anytime either by night or day. There was a "knack" in crossing, and he had got in possession of it, and was ready to ridicule anyone else that was in any way afraid of crossing. But John got kicked off this old witch of a bridge a few days back. He got a duck in the water; he got stunned by falling on a stone; he had the misfortune not to lose his breakfast, nor yet his clogs, but lighting on two oranges he had in his pockets, he spoiled their shape and deprived them of their juice. I expect some day someone will be drowned. A.B.

Letter to the Glossopdale Chronicle 9th July 1870



Photograph courtesy of Picture New Mills website ref n01205

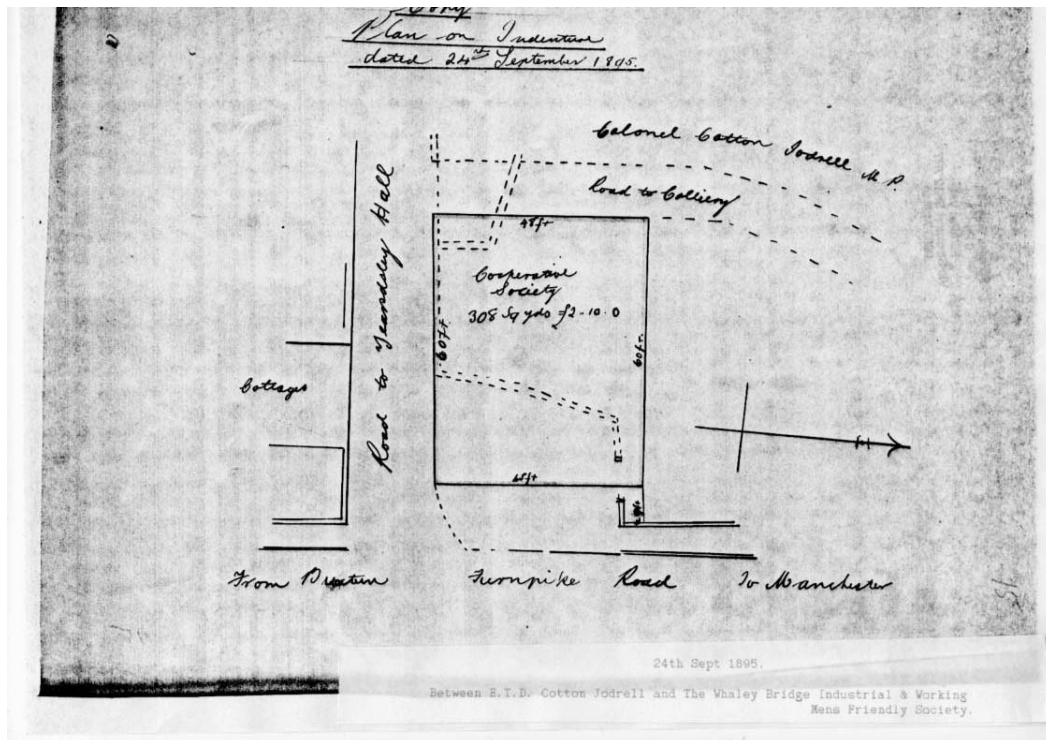
The Furness Vale Co-operative Store

The Co-op in Furness Vale was formally registered as a Co-operative Society in 1876. A shop was opened at 49 Buxton Road at the corner of Station Road.



Timothy Beard, the night soil man in front of the original Co-op store

A report in the North Cheshire Herald, in August 1977 named the society as the Furness Vale Working Men's Co-operative Society. The fifth quarterly report stated that there were between 60 and 70 members and a dividend of 2s 8d in the pound was announced. The society didn't however, prosper financially and in 1890 it merged with the Whaley Bridge Co-operative Society. The Furness Vale store became Branch No 1.



Site plan from the 1895 indenture

An indenture dated 24th September 1895 is an agreement between local landowners the Jodrell Estate and The Whaley Bridge Industrial and Working Men's Friendly Society. This is probably an agreement to the lease of land. The plot, at 142 Buxton Road was opposite

the existing shop and at the corner of Yardsley Lane. Here a new purpose built store was erected although we don't know its opening date. Originally the store only occupied half of the building which also contained a private house.

A photograph dated 1935 showed that by that date, the store had been extended to the full width of the ground floor and the entrance door moved from the corner to the middle of the Buxton Road elevation.

In 1913 the name changed to the Whaley Bridge and Buxton Co-operative Society to reflect extension into that town. Expansion saw more branches opened in Buxton and the majority of the society's turnover came from that area. The society however, maintained its base in Whaley Bridge. In 1968, the Society was taken over by the Manchester and Salford Society.

The Furness Vale store closed in the early 1970s. The building was then occupied by Riddick's Builders and later became a Chinese restaurant.



An excursion bus stands in front of the Co-op store. c1908-1912



A later picture of the Co-op. The tall man is Sam Shatwell. Next to him is Percy Hulme

In addition to the branches at Furness Vale and Whaley Bridge, there were also grocery stores at Horwich End and Buxworth (formerly a Whitehough Co-op branch) and in Buxton, Alma Street, Bridge Street, Burbage, Byron Street, Harpur Hill, Market Place, Spring Gardens, Sterndale Moor and Tongue Lane. In addition there were non-food branches in both Whaley and Buxton

CO-OPERATION AT WHALEY BRIDGE — On Saturday a public tea was held in the Board School at Furness Vale to celebrate the reopening of the Co-operative Stores in that place as a branch of the Whaley Bridge Society.

Sheffield and Rotherham Independent 21st April 1890

BREAKING INTO FURNESS VALE CO-OPERATIVE STORES.

The police have arrested at Macclesfield a young man named Geo. Brown Getcliffe, on a charge of breaking into the co-operative stores at Furness Vale, and stealing therefrom 3s. in money, ten pounds of tobacco, a quantity of pipes, and other articles. Prisoner is a painter and had been employed in painting the premises. He was taken before Mr. T. C. Toler yesterday and remanded.

Sheffield and Rotherham Independent 3rd September 1896

The Whaley Bridge Co-operative Society propose to pay a dividend of 2s. 11d. in the pound on the quarter's sales at Whaley Bridge, Furness Vale, and Horwich End, and 8d. in the pound at the Buxton branch. There are 608 members.

Sheffield Daily Telegraph 23rd August 1900

John Warren, in his diary recorded the founding of the Whaley Bridge society. His spelling has been reproduced:

1860 Saturday October 20th the First meeting of the Whaley Bridge Working Mans Co-operative Society held at the house of William Richardson Whaley known by the sine of the New Cock

1860 Saturday November 17th the Forte Metting of the Co-operative Society held in the National School at Horwich end and this was the first Meeting of teaking in shears of the Co-operative Society

1861 Monday January 28th the First Meeting that the Co-operative Committee had in there own Store Room for the Purpose to see what Grocerys the must Order for the had then between 80 and 90 Pounds By them and the thought that the might as well commence Selling there Grocerys for the Bought all the Stock that John Kinder had by him and Fixtuers all to Gattther

1861 Saturday February 2nd the Co-operative Store Opened at Whaley Bridge

A study of the 1931 price list reveals a number of surprises. The range of goods was very extensive and some items such as tinned fruit and jams was much wider than the present day. Most varieties of jam came in four different sizes. Many groceries were of course familiar but whatever was CWS Chemical Food; it came in three sizes 7d, 11d and 1s 8d. What would one do with Bisuroids or a 3½d bottle of Composition Essence. Oyster Shell Grit cost 6 shillings a hundredweight and Muffets came in a packet costing 8d. If you kept a parrot, its food cost 6½d per pound. If you were "All Out o' Sorts", Mother Seigel's Syrup would put you right for 1s 3d a bottle.



Enquire Within

One small book in our library offers some interesting tips:

Extracts from "Enquire Within" a directory of facts hints and receipts.

London April 1858

Liquid for the cure and prevention of baldness

Eau de Cologne two ounces, tincture of cantharides two drachms, oil of rosemary, oil of nutmeg and oil of lavender, each ten drops. To be rubbed on the bald part of the head every night.

To Remove Freckles

Dissolve, in half an ounce of lemon juice, one ounce of Venice soap, and add a quarter of an ounce of each of oil of bitter almonds, and deliquated oil of tartar. Place this mixture in the sun until it acquires the consistency of ointment. When in this state add three drops of oil of rhodium, and keep it for use. Apply it to the face and hands in the manner following: Wash the parts at night with elder flower water, then anoint with the ointment. In the morning cleanse the skin from its oily adhesion by washing it copiously in rose water.

To Clean Knives and Forks

Wash the blades in warm (but not hot) water, and afterwards rub them lightly over with powdered rotten-stone wet to a paste with a little cold water, then polish them with a clean cloth.

Early Rising

The difference between rising every morning at six and at eight, in the course of forty years, amounts to 29,200 hours, or three years one hundred and twenty one days and sixteen hours, which are equal to eight hours a day for exactly ten years. So that rising at six will be the same as if ten years of life were added, wherein we may command eight hours every day for the cultivation of our minds and the despatch of business.

To fill a decayed tooth

Procure a small piece of gutta percha, drop it into boiling water, then, with the thumb and finger, take off as much as you suppose will fill up the tooth nearly level, and while in this soft state press it into the tooth; then hold on that side of the mouth cold water two or three times, which will harden it.

Ointment for Scurf in the Heads of Infants

Lard, two ounces; sulphuric acid, diluted, two drachms; rub them together, and anoint the head once a day.

Offensive breath

For this purpose, almost the only substance that should be admitted at the toilette is the concentrated solution of chloride of soda. From six or ten drops of it in a wine glass full of pure spring water, taken immediately after the operations of the morning are completed.

To clean white ostrich feathers

Four oz. of white soap, cut small dissolved in four pints of water, rather hot, in a large basin; make the solution into a lather, by beating it with birch rods, or wires. Introduce the feathers, and rub well with the hands for five or six minutes. After this soaping, was in clean water, as hot as the hand can bear. Shake until dry.

Deafness

Take three drops of a sheep's gall, warm and drop it into the ear on going to bed. The ear must be thoroughly syringed with warm soap and water in the morning. The gall must be applied for three successive nights. It is only efficacious when the deafness is produced by cold. The most convenient way of warming the gall is by holding it in a silver spoon over the flame of a candle. The above remedy has been frequently used with perfect success.

Parrots

May be taught to talk by covering the cage at night, or rather in the evening, and then repeating to them slowly and distinctly the words they are desired to learn. They should be kept away from the places where they would be liable to hear disagreeable noises, such as street cries, and the whistling and shouts of boys at play, or they will imitate them, and become too noisy to be peaceable.

Fact or Fiction

There are various stories about our neighbourhood that whilst entertaining and colourful, are not always correct. Often they are based on fact but have lost their accuracy in retelling.

At the bottom of Yeadsley Lane, a stone stands against the garden wall. Many people have claimed that this is a mounting block, the type of structure used by ladies to mount a horse. Mounting blocks were often cut from stone and usually comprise three or four steps leading to a small platform. The Yeadsley Lane stone is quite narrow and irregularly shaped and hardly large enough to mount a bicycle. Nearby, in the gable end of the row of houses is a blocked up window. This is said to have been the place where miner's were paid their wages of a Friday afternoon. The houses were sometimes known as "Office Row" but the wages office was at the other end, next to the garage; it's recorded in the deeds.

A little farther along Buxton Road and just by the garage is the unmade track now called "Coachmans Lane" (missing its apostrophe !) This is said to have been the coach drive leading to Yeadsley Hall. It did indeed lead to the Hall but not to the front door and was probably just a farm track. Old maps show that it wasn't constructed until late in the 19th century. Any coaches would of course have used Yeadsley Lane which was made up in the early 1800s.

It has often been claimed that Wesley preached at Waterside on several occasions and the stile where he stood has been pointed out. Just across the river from Waterside is a large field known as "The Bongs"; the water treatment works now occupies part of it. Wesley is recorded as having preached at The Bongs but this was another location, on the hillside high above New Mills. A case of mistaken identity !

Above Whaley Bridge, the Roosdyche was often claimed to have been a Roman chariot racing arena. There is a lot of speculation about its history and ancient artefacts have been found in the vicinity but there is no evidence of any Roman presence in Whaley apart from the route of the Manchester to Buxton road. Expert examination has concluded that the feature was caused by glacial action.

Close by is the lodge to Horwich House, claimed by some to have been a former toll house. The Manchester to Buxton Turnpike was constructed in 1724 and a branch was built from Whaley Bridge to Chapel-en-le-Frith. This climbed out of Whaley Bridge and passed the site of Horwich House and its lodge. The Whaley Tollbar was where the Natwest Bank was later built. This branch turnpike involved steep climbs at each end and in 1770 the road was superseded by the new Macclesfield to Chapel-en-le-Frith turnpike. On this road, a Tollbar was erected at Cockyard and to ensure that traveller didn't avoid this by using the old route, a corresponding gate was built at Higher Crossings. There is no record of any tollhouse existing near Horwich House.

The Co-op in Whaley Bridge has a mysterious cellar. The layout gives the appearance of a street lined with shops, the storerooms on either side having doors and windows. It has been claimed that this was the original street level. Apart from it being too narrow to form a street, the Co-op building was erected well after the building of the bridge and establishment of the modern street level.

Communities of Whaley Bridge

In Whaley there have been various community nuclei: Stoneheads where many of the cottages were miners' cottages for those working the nearby Hockerley Colliery; Taxal, which had a rather more wealthy mixture of inn, church, rectory, hall and farmhouses; Old Road, which grouped together inn, so-called weavers cottages and a smithy; and the

Canal Street area which, apart from its inns is mainly a residentially group of buildings including 18th century cottages, early and middle 19th century houses of a very varied

10

character. The 18th century cottages are typical low built horizontally styled buildings. There is a pair of houses with stone steps to raised arched doorways of 1839, which also had an arched entrance to what would originally have been an interior court. Around the corner from these is a pair of houses of slightly later date which have a surprisingly well-masoned facade revealing its Victorian character in, most obviously, its central window strut ornamentation and also in its rather heavy appearance. A portico on another cottage gives a pleasant early 19th century flavour to the house, though whether it was built on originally or has since been added from another source lies open to question. A rather tall and narrow doorway is visible on another early cottage and is characteristic of a great number of doorways on houses about Whaley which were built between 1820 and 1860/70. This area also includes the Canal Terminus Building which is threatened with destruction in the very near future in order to make room for a proposed municipal swimming baths, originally planned for Whaley as long ago as 1936.

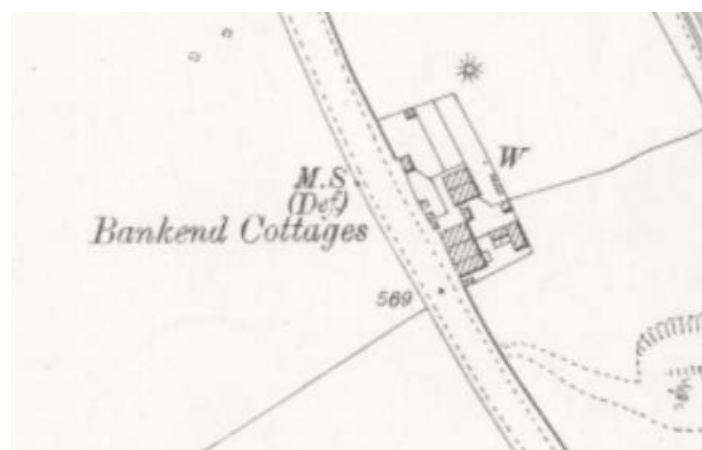
Extract from the archive of Whaley Bridge Amenity Society.

Bankend Cottages



The late Jean Plover lived at 243 Buxton Road, one of a row of four houses at Bank End. She told her son, Guy Adcocks that this, and 241 next door were the original Smithy Houses and that the adjoining 245 and 247 were built at a later date.

Lisa Wright had lived at 241 and knew that these had once been a blacksmith's. She says that there was a horse shoe imprint on one of the inside walls. No matter how much it was painted, it always came back !



Trace That Place

Trace That Place is a fascinating new website where one may discover the origin and pronunciation of town and village names throughout Britain.

Although this is a subscription site, a 3 day free introduction is offered.

You will of course find a page for Furness Vale and read how our village was originally called The Furnace. Each location has a small gallery of local photographs.

Did you know that the name Low Leighton means a place with a kitchen garden and that the name of The Torrs comes from the Old English "torr" meaning a rocky peak.

The website has a vast amount of information and has several different ways to search including an interactive map.

This is a very rewarding site to explore: <https://www.tracethatplace.com/>



Safe And Sound



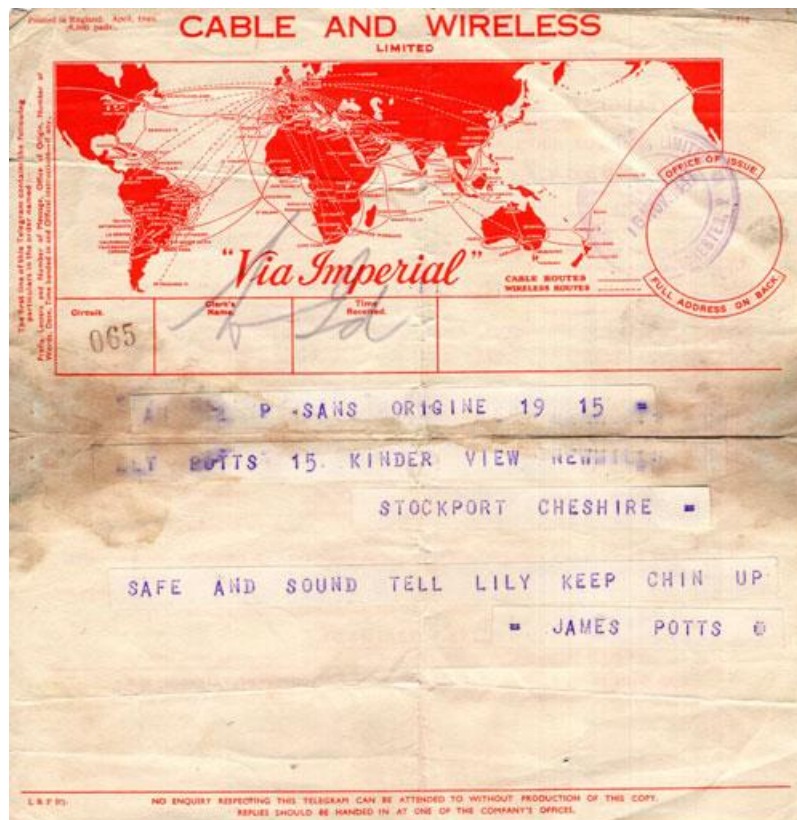
On 13th November 1941, the aircraft carrier HMS Ark Royal was sailing from Malta to Gibraltar. at 15.41 she was hit below the waterline by a torpedo fired from the German submarine U-81. Taking on a vast amount of water, she quickly began to list to starboard. Attempts were made the following day to restart the engines but further listing caused the boilers to again shut down and severely increase the listing. Eventually the hull broke in two, both parts sinking rapidly.

Just one seaman lost his life, the remaining 1,487 officers and crew were evacuated and taken to Gibraltar.

Aboard the Ark Royal was Jim Potts of New Mills. Just three days later, his family received a telegram assuring them that he was safe.

Jim Potts, born in 1921, joined the RAF in November 1938 and achieved the rank of Corporal. He was awarded the Africa Star for service on the Atlantic Station. He was discharged in March 1946 and his commanding officer wrote "a keen, smartly turned out N. C. 6. with ability to control men. Always performs extra duties cheerfully and gets the best from his men. Has a good knowledge of his trade".

Loan of telegram, and service and release book, courtesy of Lisa Wright.

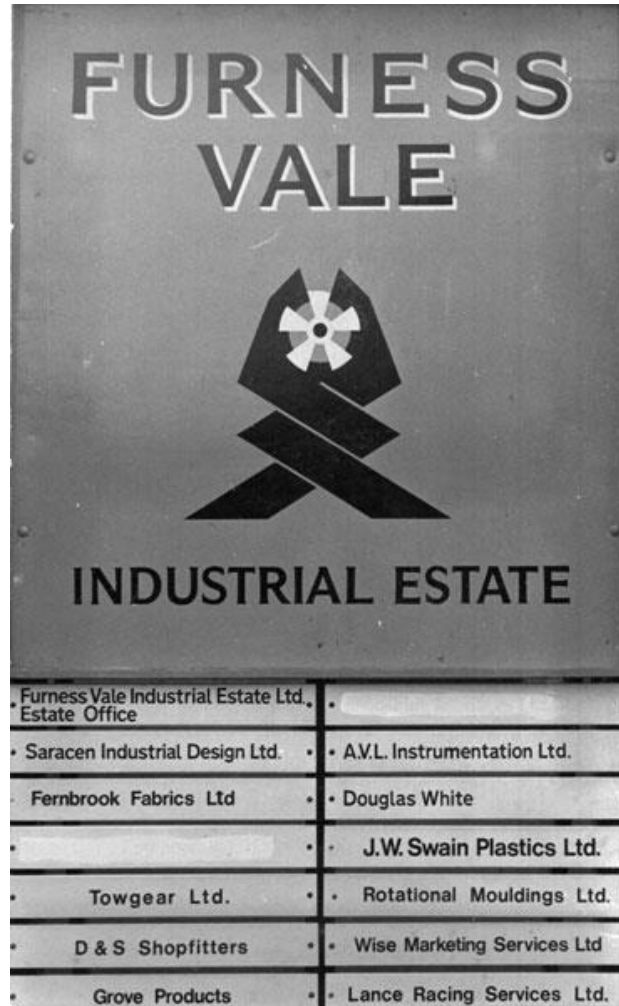


Gallery

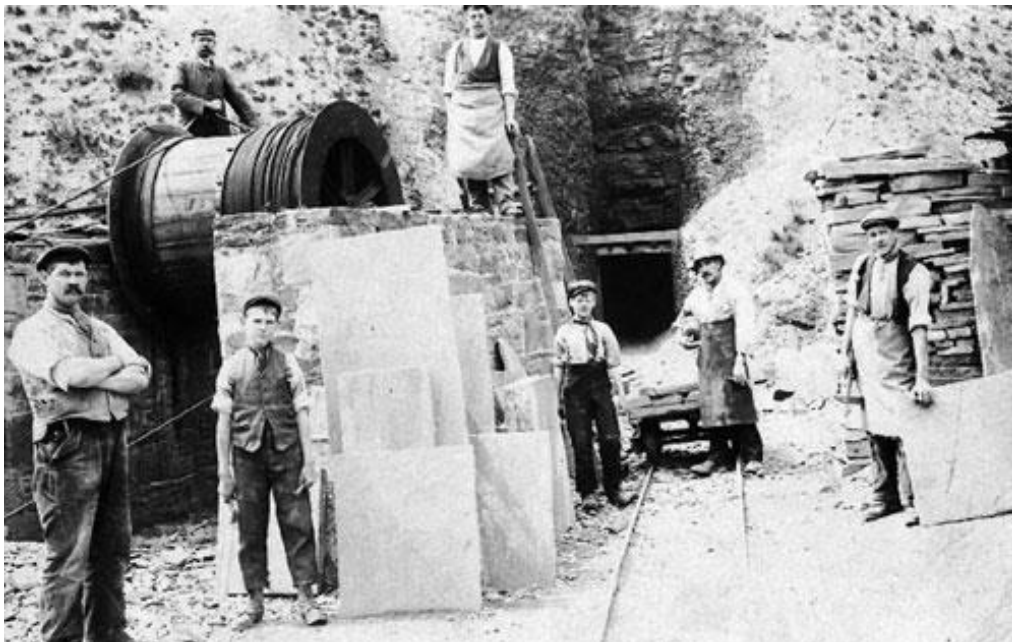
Whaley Bridge Transhipment Warehouse in the snow. The photograph is undated. A pair of narrowboats appears to be trapped by the iced up canal.



The Post Office in Market Street, Whaley Bridge. Note the young boy looking out of the window and the plaque "Riverside 1897". The small recessed panel at first floor is probably an air vent for the scullery that was behind. Next door is the Co-op furnishing department.



Sign at the entrance to Knowles Industrial Estate

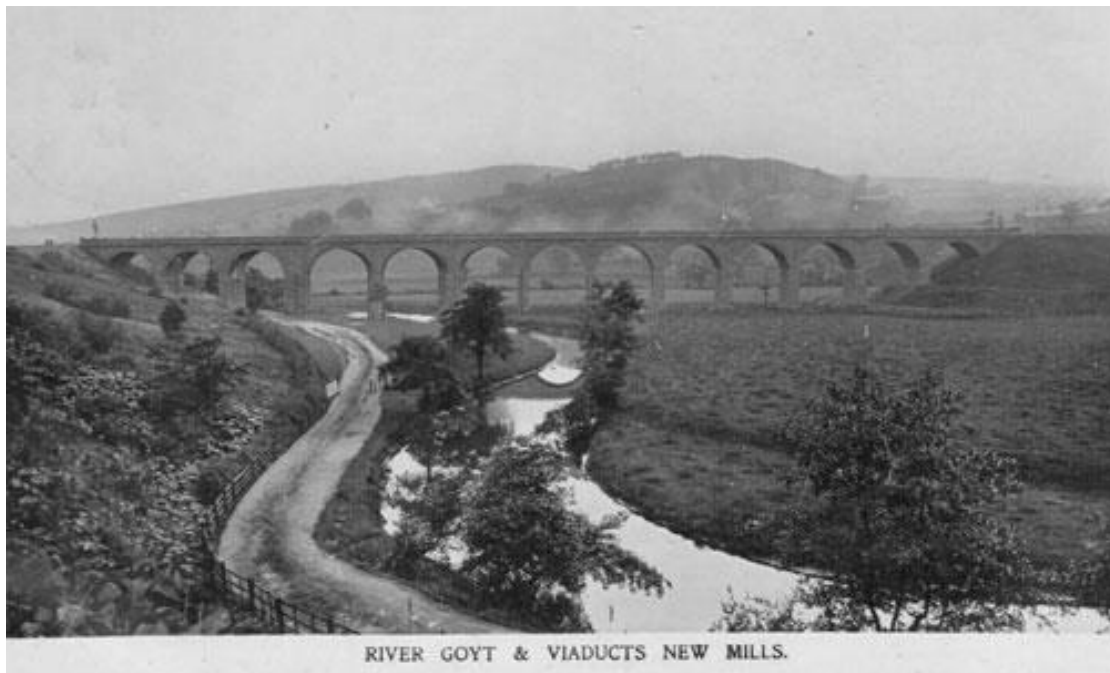


Cracken Edge and the entrance to the stone mine. The winding drum on the left is for operating the inclined plane used to transport stone down to the valley floor.

15



A postcard of Disley showing the Ram's Head and the White Horse. The style of dress and lack of traffic suggests that this is probably early in the 20th century.



An early view of the New Mills railway viaduct. This is the view towards Goytside Farm. Bank End is in the background.



16



Furness Vale Station in the 1980s

Post Office

Furness Vale Post Office is open every Tuesday and Thursday afternoon from 13.30 to 16.30.

Refreshments are served and there is a community shop for grocery essentials, sweets and a choice of bargain greetings cards. A good selection of History Society publications is always on sale

Furness Vale Community Centre and Social Club is at 1, Yeadsley Lane SK23 7PN next to the former Chinese Restaurant.



Furness Films



Future presentations are:

April 19th -The Great Escaper
Michael Caine and Glenda Jackson

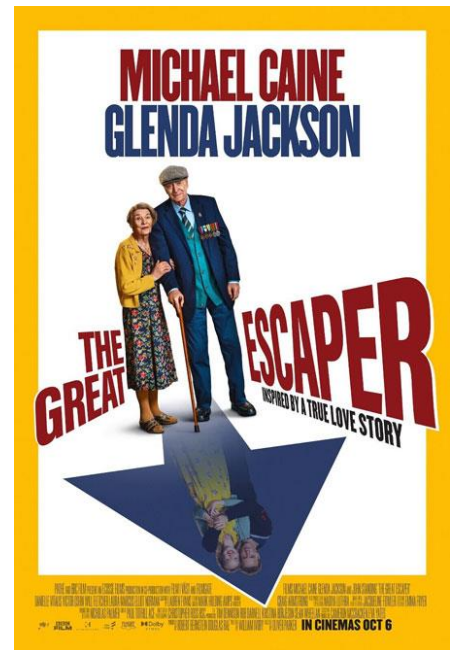
May 17th – Dream Horse
Toni Collette and Owen Teale

June 21st– One Life with Anthony Hopkins

July 19th – The Miracle Club
Maggie Smith and Kathy Bates

Doors open 7.0pm for
A 7.30 start

Admission by donation - £3 recommended



Meetings

Furness Vale History Society

Tuesday 2nd April Railways that never were, Alan Roberts tells of 19th century proposals

Tuesday 7th May John Hambleton's Curio Quiz.

Tuesday 4th June Beekeeping by Frank Pleszak

All of our meetings are held at Furness Vale Community Centre, Yeardsley Lane. Doors open at 7.0pm for a 7.30 start.

New Mills Local History Society

Friday 12th April – Chartism. A talk by Professor Michael Sanders of Manchester University

Friday 10th May – AGM and Buxton Pavillion Gardens, a talk by Ros Westwood, Derbyshire's museum manager.

Meetings are held at New Mills Town Hall at 7.45pm. Admission is £2 including refreshments.

18

Marple Local History Society

Meetings are at the Methodist Church, Church Lane, Marple SK6 7AY at 7.45pm admission is £4

Monday 15th April AGM and Ludworth Colliery with Frank Pleszak

Buxton Local History Society

Wednesday 17th Apr The Geology of Derbyshire presented by Pete Webb

Wednesday 15th May. Victorian Ashford-in-the-Water with Ian Pykett.

June visit, date and place to be advised.

Meetings are held at Trinity Church Hall, Hardwick Mount at 7. 30pm

Disley Local History Society

Meetings are held at Disley Community Centre, Buxton Old Road on the third Thursday of Each month at 7.30pm

Whaley Bridge Living History Group

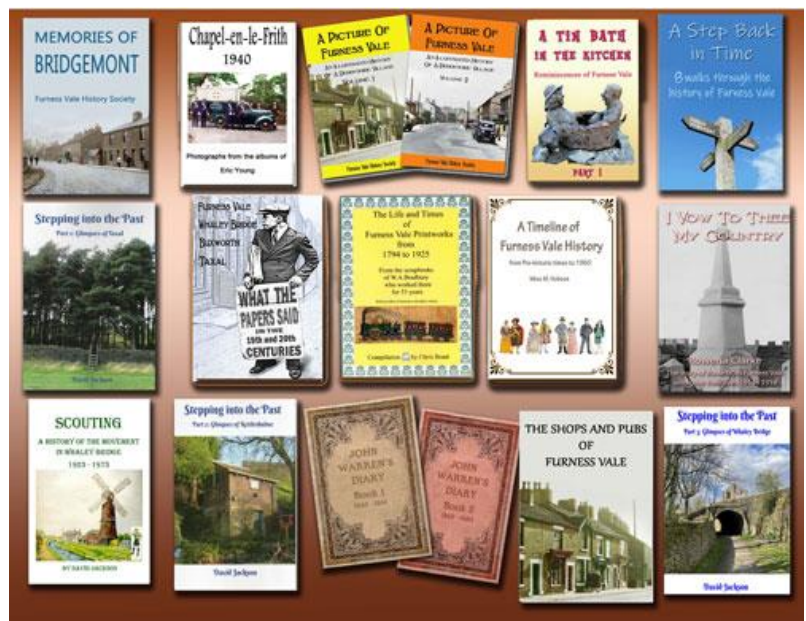
The next meeting is on Thursday 11th April . Meetings at Footsteps, Market Street every Thursday until 2nd May at 2pm. Admission £2.

Society Shop

The History Society offers a wide range of publications and many of these are now available by mail order. Visit our Online Shop to browse the bookshelves where we currently have a range of 18 titles <https://www.etsy.com/uk/shop/Tunnelbreeze>

Many of our titles are available as e-books and may be purchased from Amazon Kindle. A list of books may be viewed here: <https://amzn.to/2xnLDQi>

All of our books are available direct from the History Society and many are on sale at the Community Shop on Tuesday and Thursday afternoons. Our most popular titles are now on sale at Footsteps, Market Street, Whaley Bridge.



Don't Forget the

Website

Remember to visit the History Society website. <http://furnesshistory.blogspot.com>

We always welcome contributions to both the website and to this newsletter. Please hand these to David Easton or email them to furnesshistory@gmail.com tel 01663 744080
The next edition of the Newsletter will be distributed early in April 2023

Social Media

We have a lively presence on Facebook where you can follow our activities on an almost daily basis. We always welcome comments and new posts.



<https://www.facebook.com/furnesshistory>

We also recommend neighbouring groups all of which have a strong local history interest;

Whaley Bridge past and present <https://www.facebook.com/groups/438388482840816/?ref=ts>

Buxworth Reunited <https://www.facebook.com/groups/202542456586634/>

Eh Up New Mills <https://www.facebook.com/groups/165879423592725/>

Growing up in Chapel <https://www.facebook.com/groups/1642762309270765/>

The Buxton Line – featuring our local railway: <https://www.facebook.com/groups/BuxtonLine/>

